



RN Simulation Mode

Handbook



RACE-NAVIGATOR.COM



## TABLE OF CONTENT

1.	GENERAL OVERVIEW .....	4
1.1.	LIST OF TRACKS AVAILABLE IN SIMULATION EVENT .....	5
2.	REQUIREMENTS .....	6
3.	SIMULATION EVENT INSTALLATION.....	7
4.	RN SIM CONNECTOR INSTALLATION .....	8
4.1.	RN SIM CONNECTOR APPLICATION.....	10
5.	ASSETTO CORSA INSTALLATION .....	12
6.	SIMULATION MODE USAGE .....	13
6.1.	RN SIM USING LAN CABLE CONNECTION .....	14
6.2.	RN SIM USING WI-FI CONNECTION .....	16
6.3.	RN SIM USING ROUTER CONNECTION.....	18
6.4.	SETUP RACE NAVIGATOR .....	19
6.5.	START ASSETTO CORSA RACING SIMULATOR .....	20
7.	SIM LAPS ANALYSIS .....	22



**Thank you for choosing Race Navigator!**

Please read this manual before using the  
RN Simulation mode for the first time.

Visit our website for more information:  
[www.race-navigator.com](http://www.race-navigator.com)

Manual updated: 20-04-2020

## 1. GENERAL OVERVIEW

The RN Simulation Mode is a mode that activates a connection between your Race Navigator device with the racing game simulator. You can use your Race Navigator at home practicing with your simulator in the same way as you do on the track. Use real time gap to reference timing, record all data from the simulator on the RN system including videos from laps and compare them using RN Analyzer tools for Windows or iPad. Learn a new track or remind a track that you did not visit for a long time before you go there and save a lot of time! Right now Assetto Corsa racing simulator for PCs is supported.

### Major Features:

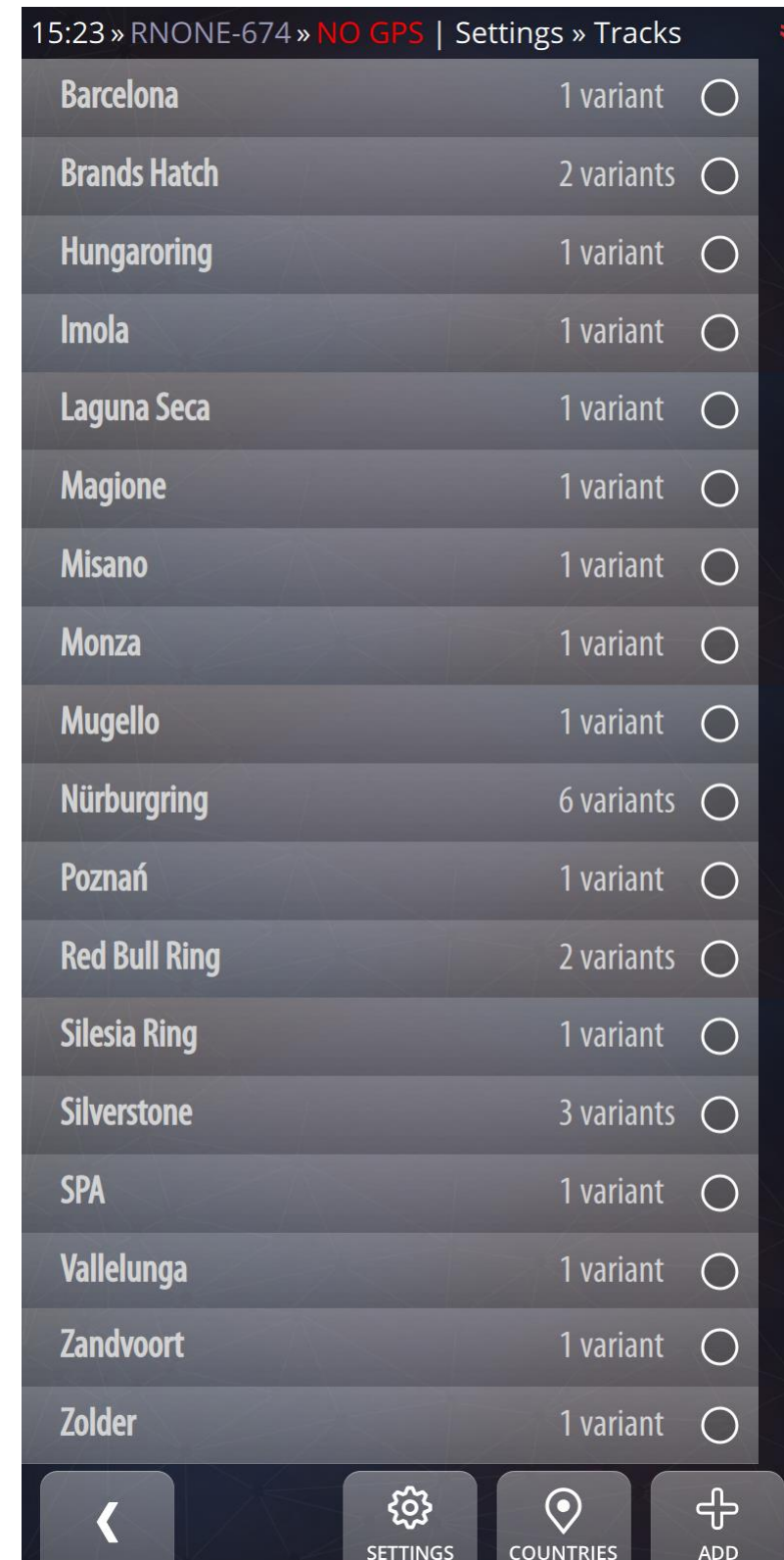
- real time gap to reference timing,
- ideal GPS coordinates matching between the simulator and real world,
- precise comparison between Simulation laps,
- precise comparison between Simulation to real live laps,
- analysis with RN Analyzer tools.





## 1.1. LIST OF TRACKS AVAILABLE IN SIMULATION EVENT

1. Barcelona.
2. Brands Hatch 2 Variants:  
GP, INDY.
3. Hungaroring.
4. Imola.
5. Laguna Seca.
6. Magione.
7. Misano.
8. Monza.
9. Mugello.
10. Nürburgring 6 Variants:  
Bridge to Gantry, Nordschleife, GP + Nordschleife,  
Grand Prix, Grand Prix Kurzanbindung, VLN.
11. Poznań.
12. Red Bull Ring with 2 variants:  
Red Bull Ring, Red Bull Ring Old SL.
13. Silesia Ring.
14. Silverstone with 3 variants:  
GP, National, International.
15. SPA.
16. Vallelunga.
17. Zandvoort.
18. Zolder.



## 2. REQUIREMENTS

### Simulation Event type

Visit the RN Store to purchase the Simulation Event type, please:

<https://store.race-navigator.de/en/>

### RN SIM Connector Application

Visit the download page of RN Software to download RN SIM Connector, please:

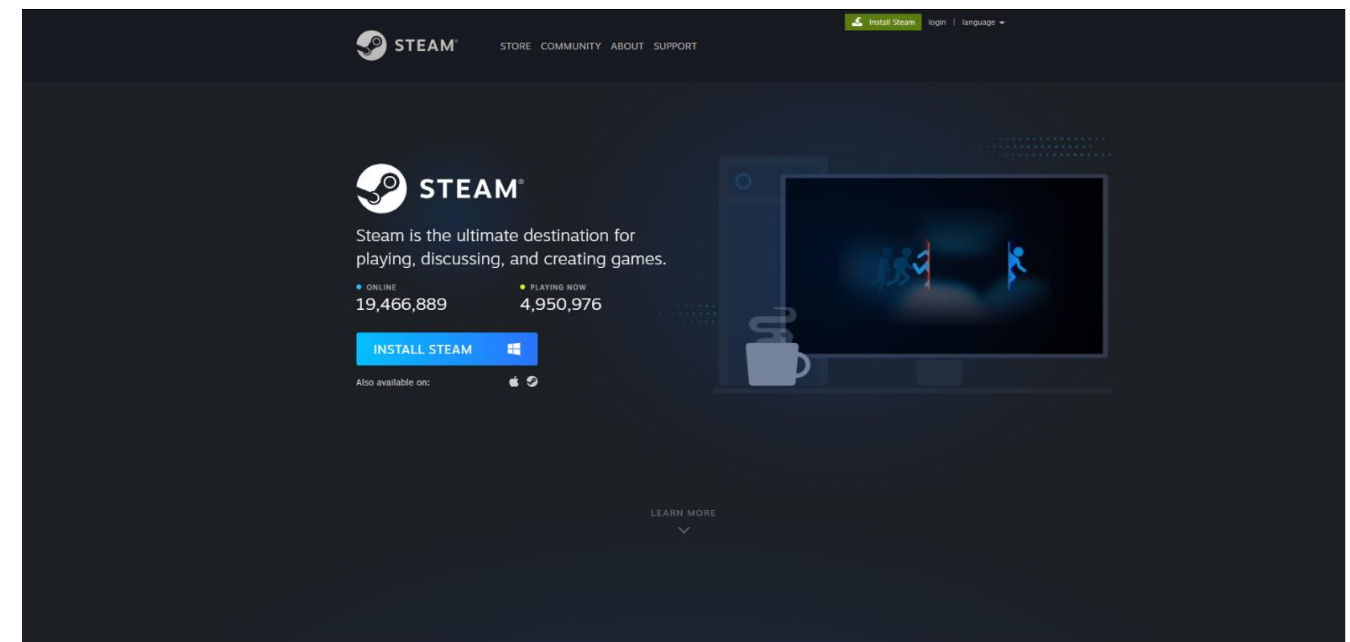
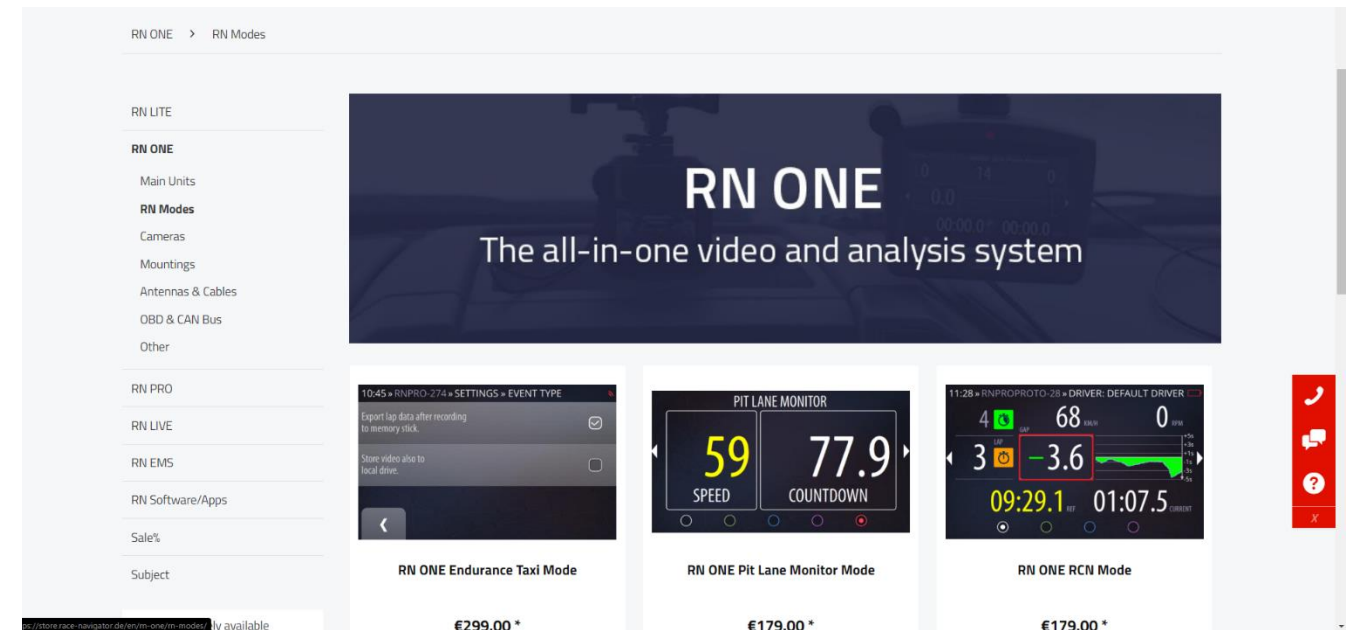
<https://store.race-navigator.de/en/rn-softwareapps/>

### Assetto Corsa Simulator for PC

Assetto Corsa requires a STEAM Client:

<https://store.steampowered.com/about/>

Buy Assetto Corsa directly on STEAM STORE or Activate Steam Product Key in your STEAM client.



### 3. SIMULATION EVENT INSTALLATION

#### Update your RN device

After a purchase of the RN Simulation Event please update your RN device to the latest version. The Simulation Event will be available in an Event section in SETTINGS.

#### Update your RN device using RN Connect Application

You can also update your device using RN Connect Application. For more details about RN Connect usage please acquaint yourself with User Manual of your RN device.

#### Choose Simulation Event

Go to SETTINGS → EVENT → SIMULATION

The Simulation Event is available on the Event list. Once you select it, your Race Navigator is ready to work with the racing simulator. Please note that a track list is now limited to the track list available in the racing simulator.



#### 4. RN SIM CONNECTOR INSTALLATION

##### Application download:

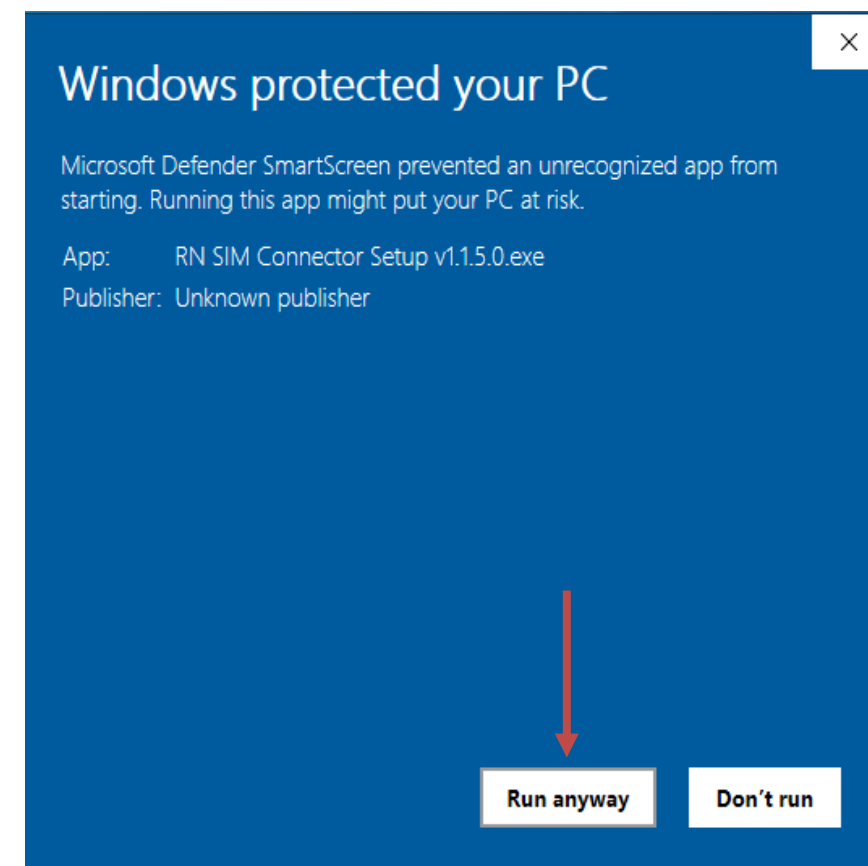
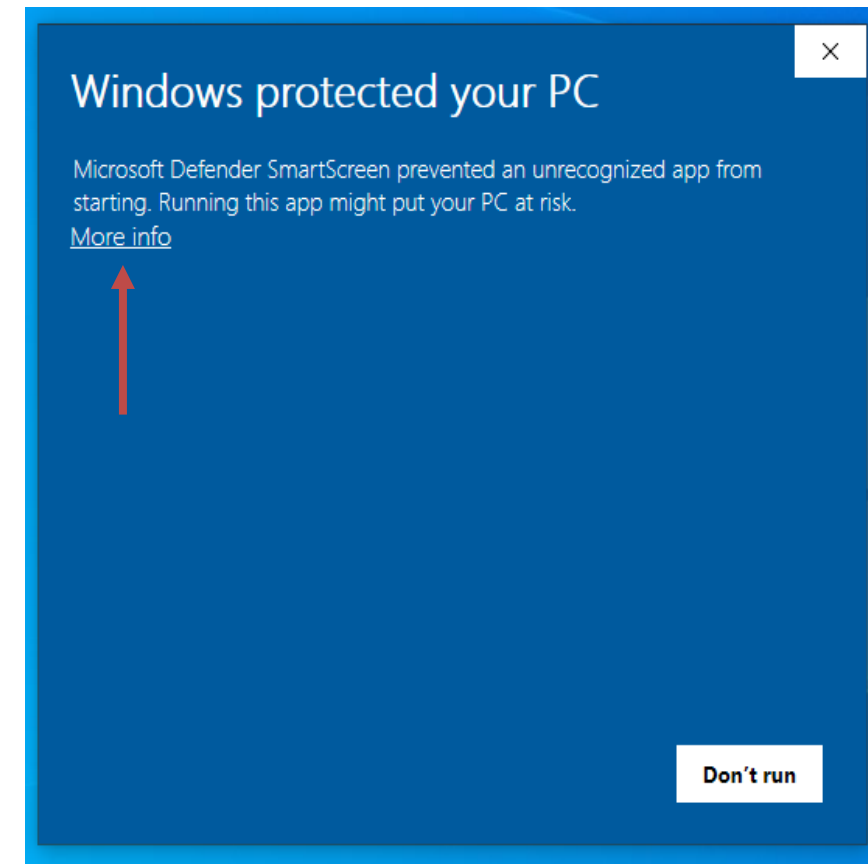
Download RN SIM Connector application from link below:

<https://www.race-navigator.com/en/rn-apps/>

After downloading the installation, please proceed with this installation steps:



- Click on the RN SIM Connector Setup icon:
- If Windows Defender window pops up please click: "More info"
- Then "Run anyway"

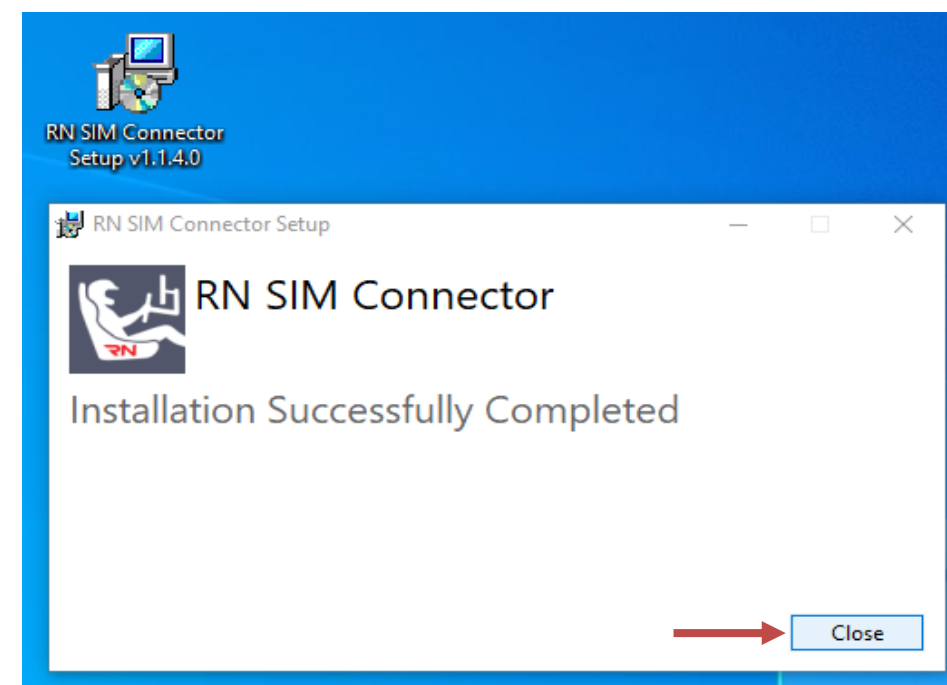




- Check License terms
- Click "Install"



- When Installation is Completed Close the window.



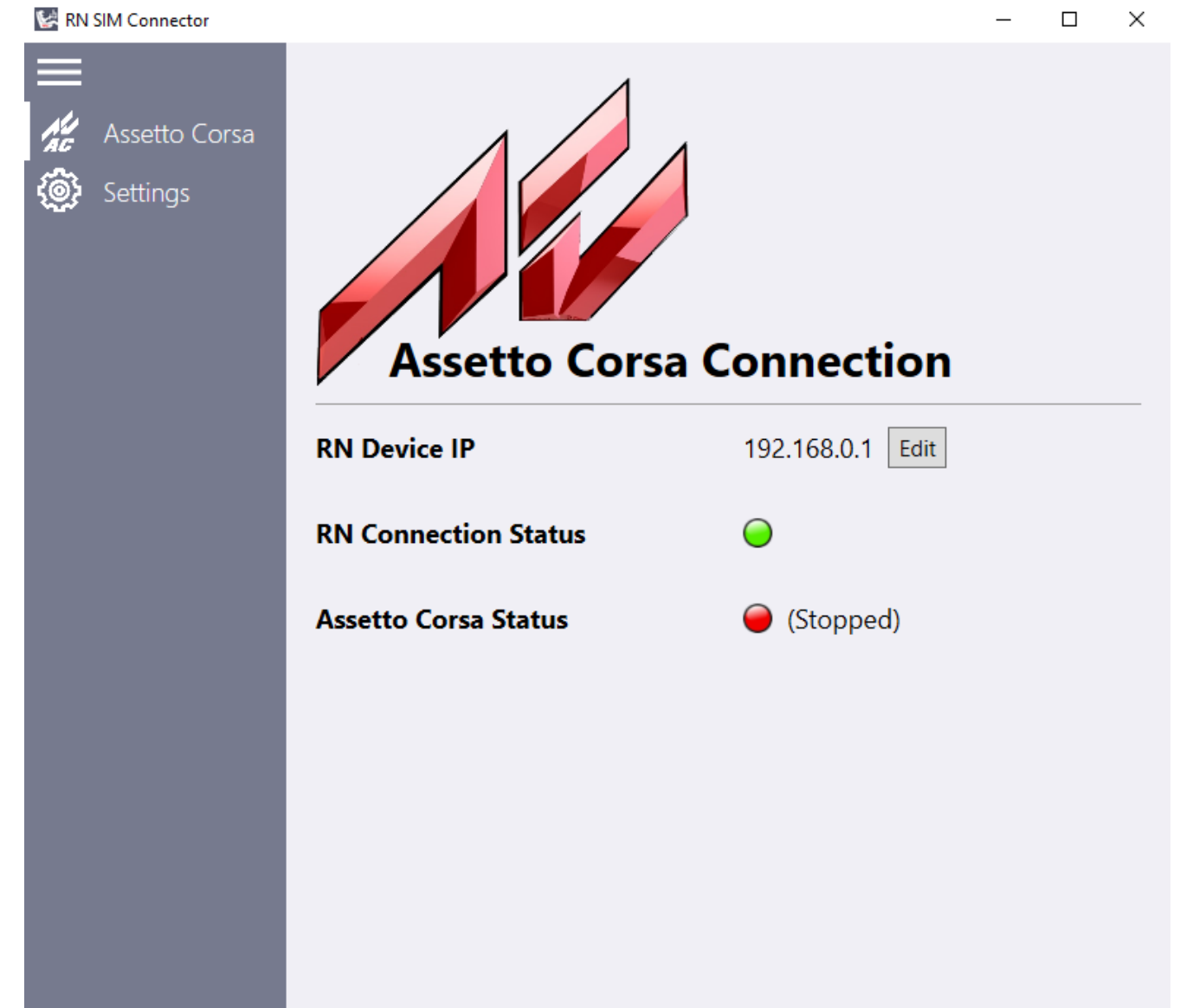
## 4.1. RN SIM CONNECTOR APPLICATION

Click on RN SIM Connector icon on your Desktop



1. Application has 2 sections in MENU: Assetto Corsa and Settings.
2. In Assetto Corsa tab you can:
  - Set up RN device IP by clicking on Edit button,
  - check the RN connection status with your PC,
  - check the Assetto Corsa connection status with your RN.

Indicators have RED color by default and turn to GREEN when connection is established.

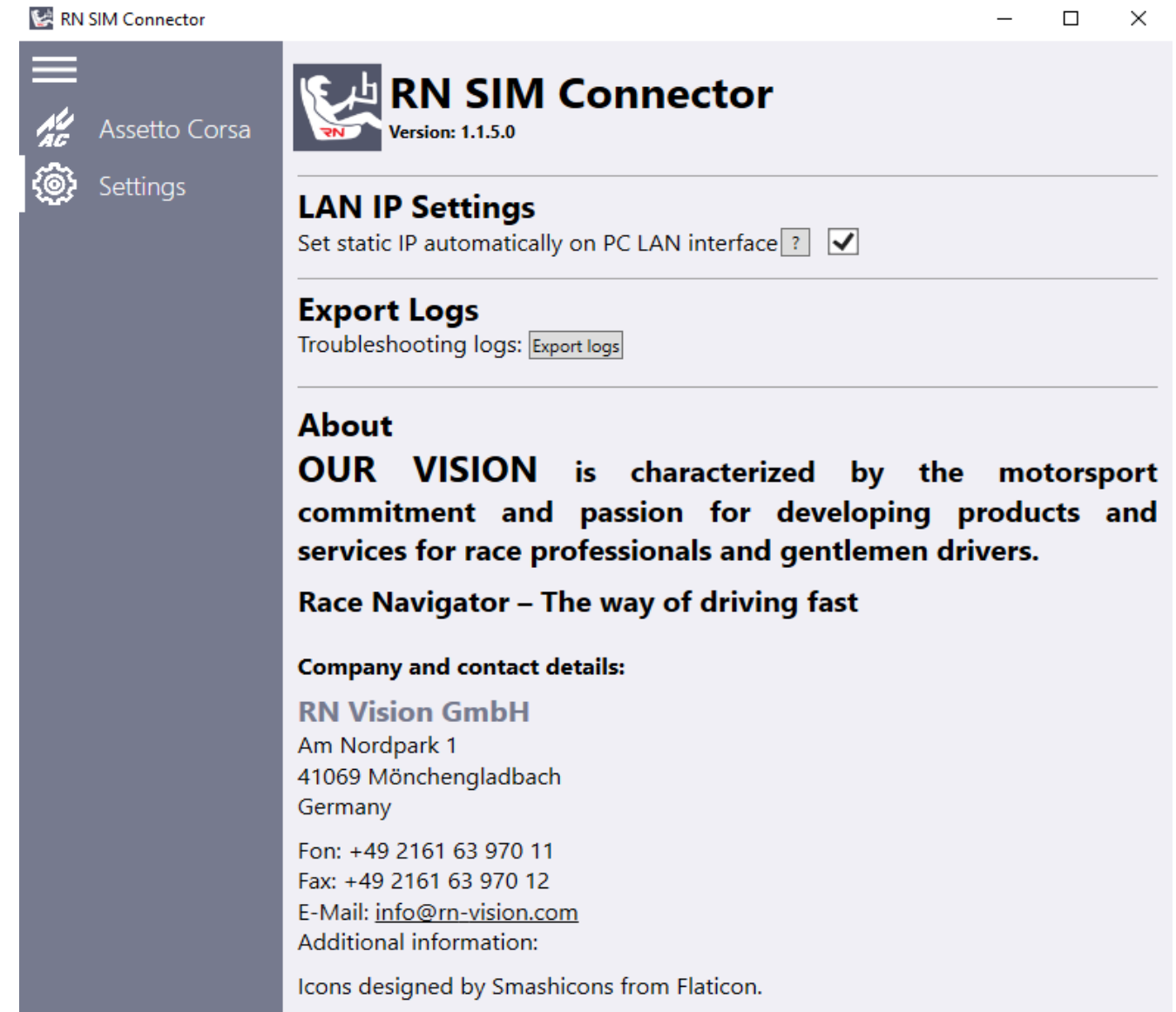


## RN SIM SETTINGS SECTION

To open Settings section click on an "Settings" Icon.

The Settings section contains:

- Information about version number,
- Set static IP automatically on PC LAN interface checkbox. This checkbox is selected by Default. It automatically changes your Ethernet settings to support a connection with your RN device by LAN cable. After you close the application all your Ethernet settings return to previous state. Please note that If you are using LAN as your main Internet interface when you start RN SIM Connector Application your connection to internet will be lost. If you want to remain with your current LAN settings, please uncheck this box and use Wi-Fi connection with your RN device when using RN Simulation Mode.
- Export logs feature,
- RN Vision GmbH company details.





## 5. ASSETTO CORSA INSTALLATION

Download the Steam client here:

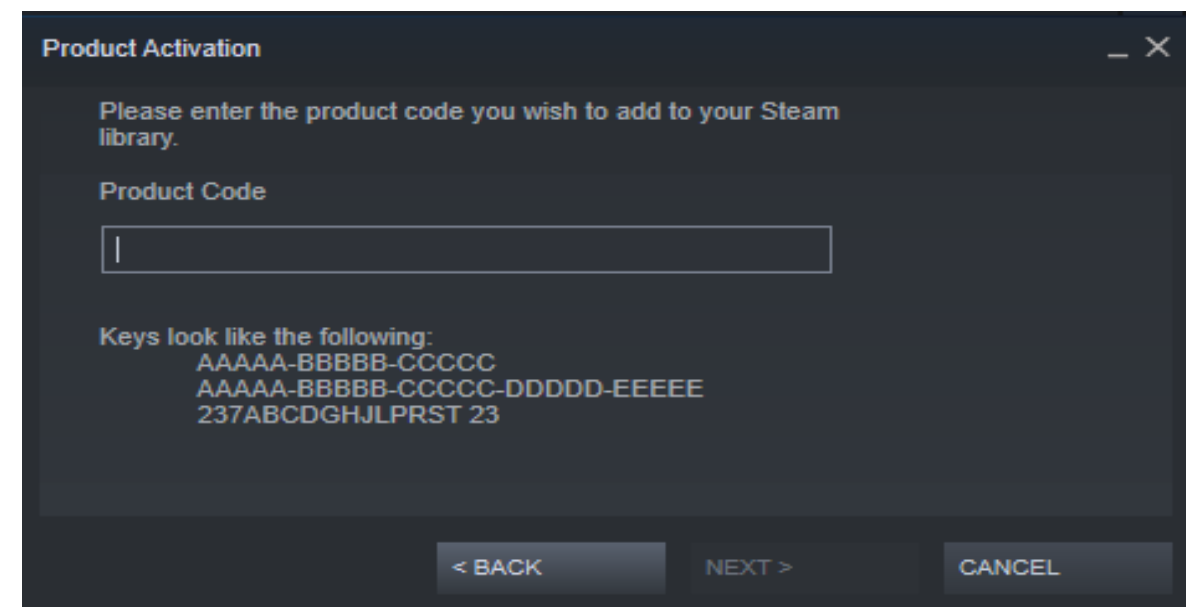
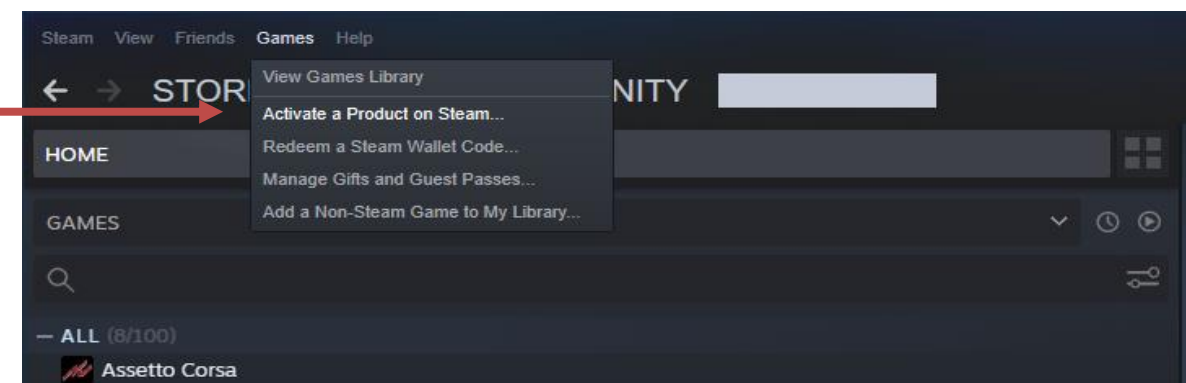
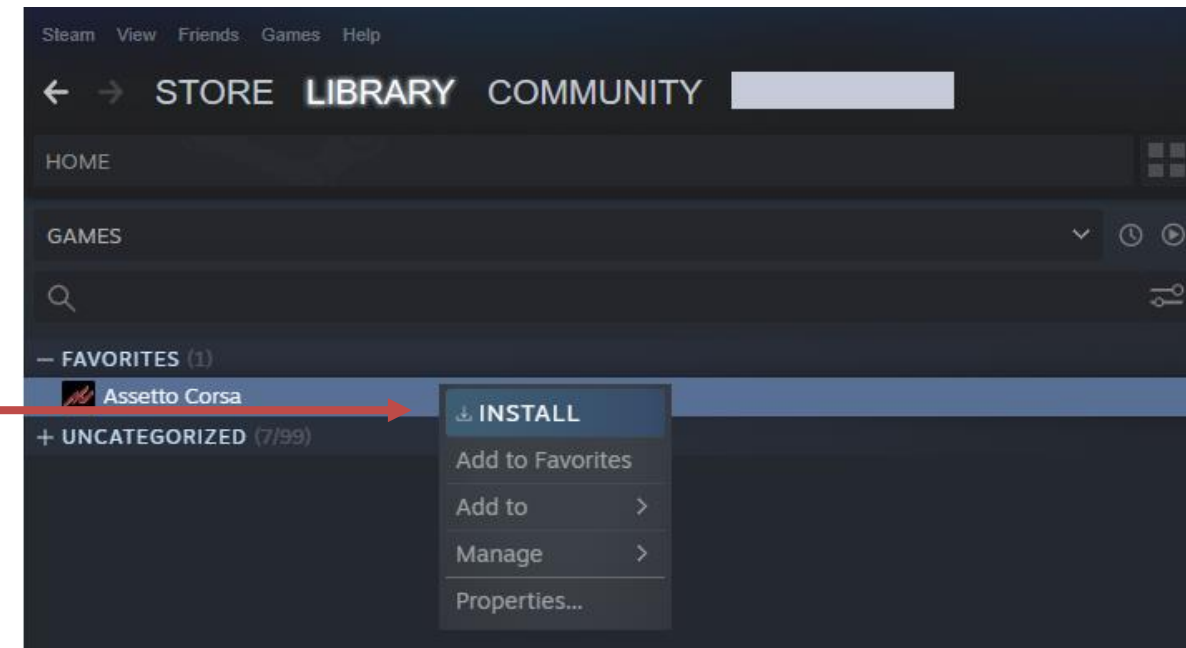
<https://store.steampowered.com/about/>

Create a new account or use your existing one.

Please note that your Steam Login will be shown in your Assetto Corsa as your username. You can buy the Assetto Corsa racing simulator directly from the Steam store. All purchased products are directly available in Library ready to install.

Activating Assetto Corsa Steam product key from another store:

You may also buy it from a different source and then activate a Product Key in the Steam. Once the simulator is in your library proceed with an installation process.



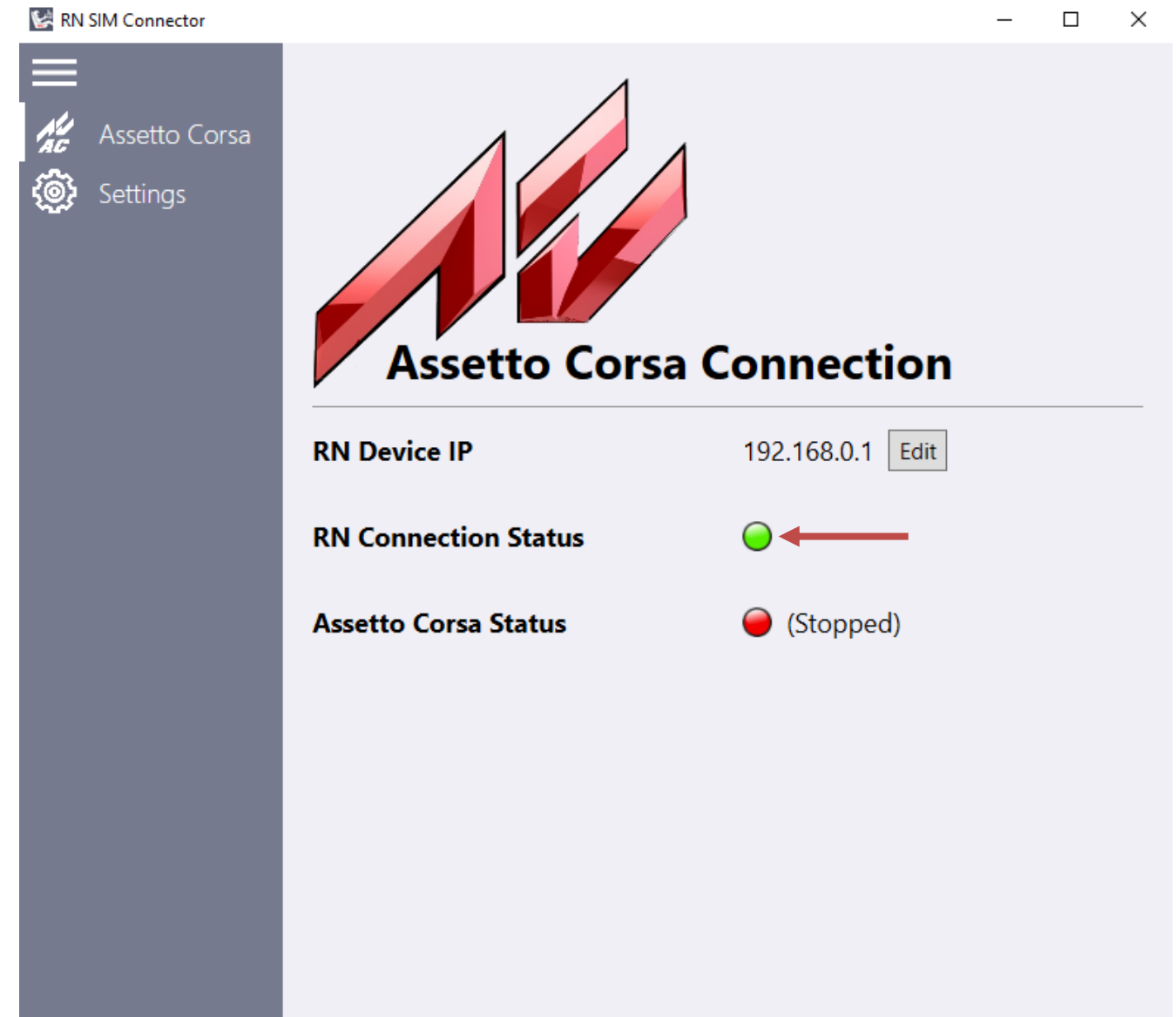
## 6. SIMULATION MODE USAGE

To start using RN Simulation Mode first turn on RN SIM Connector Application.



Click on RN SIM Connector Icon on your Desktop

When you successfully connect your RN device to RN SIM Connector Application "RN Connection Status" will change to GREEN.



## 6.1. RN SIM USING LAN CABLE CONNECTION

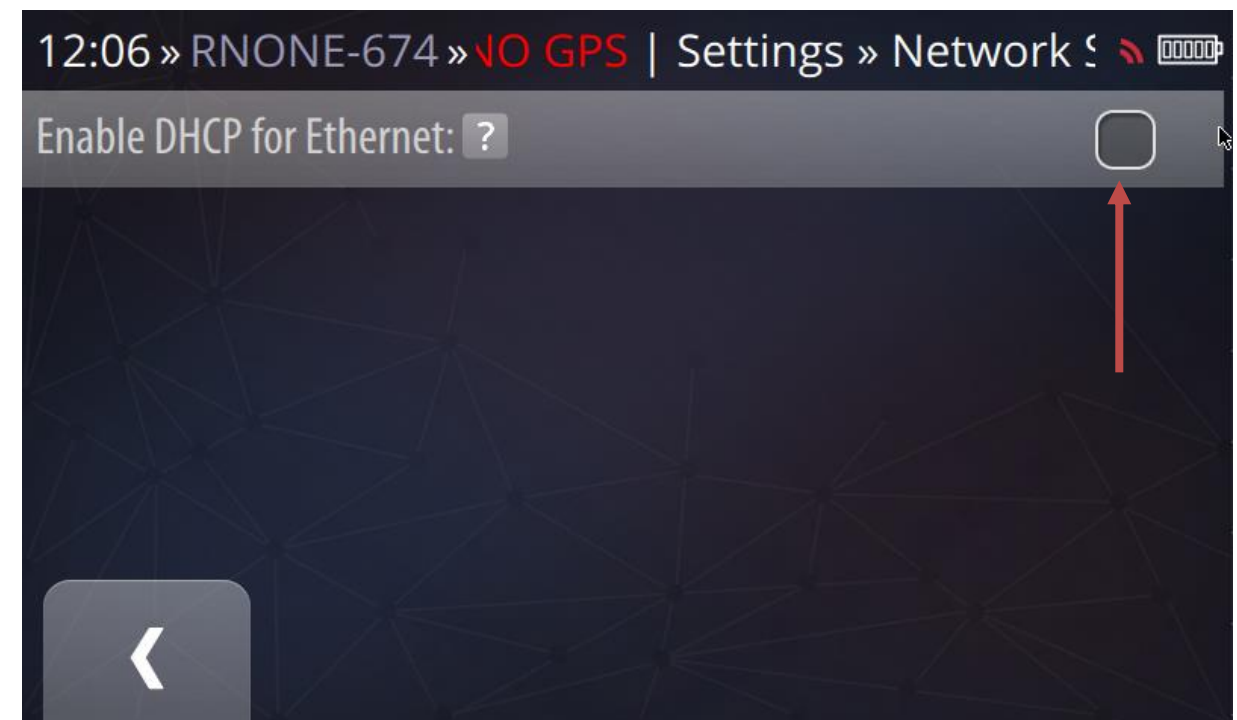
It is recommended to use LAN cable connection instead of Wi-Fi connection to secure a stable communication between devices.

Settings in RN device:

GO TO: SETTINGS→ NETWORK →LAN SETTINGS

In NETWORK →LAN SETTINGS

Uncheck "Enable DHCP for Ethernet" box





### RN SIM Connector:

Set the IP address on your PC by enabling a checkbox in Settings in LAN IP Settings section.

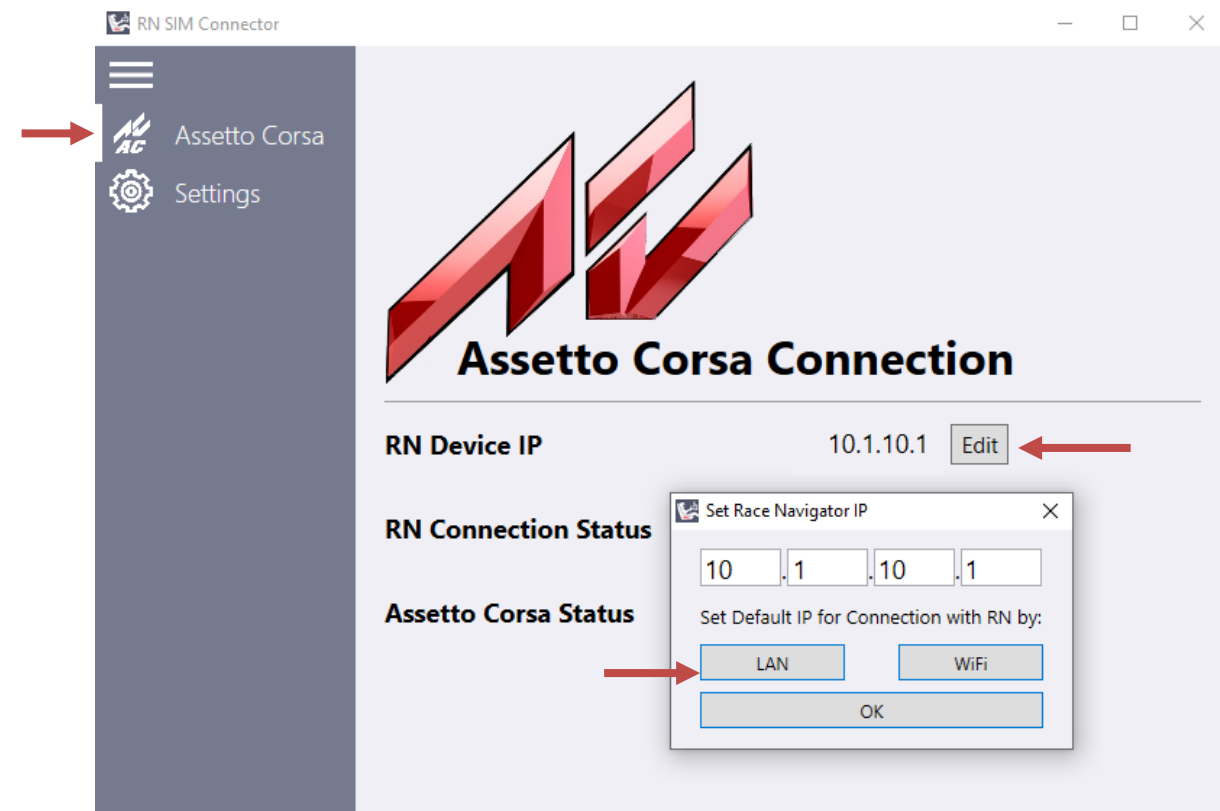
Set the IP address of RN device to a default LAN IP address by:

Go to Assetto Corsa tab,

Press Edit button near to the IP address,

Press LAN button and OK.

Check if RN Connection Status diode is green.



## 6.2. RN SIM USING WI-FI CONNECTION

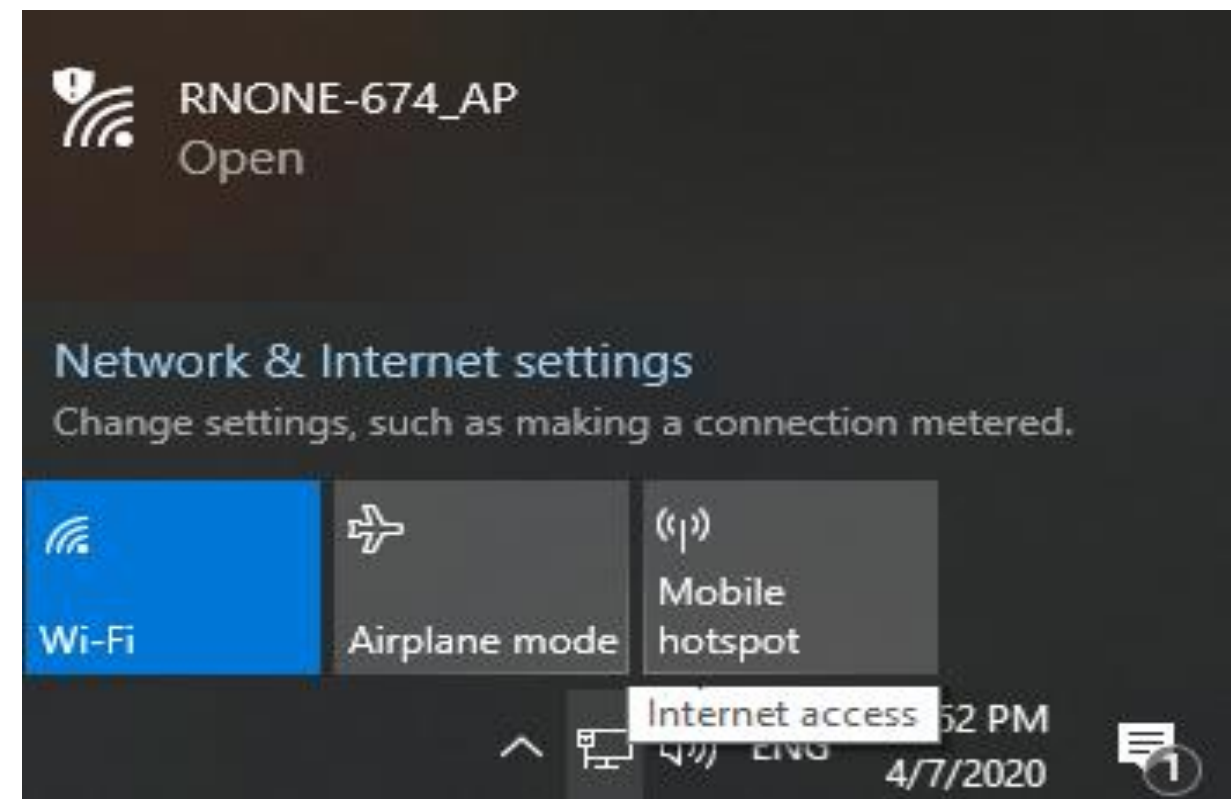
If your PC has the LAN interface occupied or you do not have a LAN cable available, you can connect your RN device by Wi-Fi.

Settings in RN device:

In SETTINGS → NETWORK → TAP: "AP MODE".



Connect to your device Access Point. Click on Internet access icon on your Taskbar.



## RN SIM Connector:

Go to Settings tab and disable:

"Set static IP automatically on PC LAN interface"

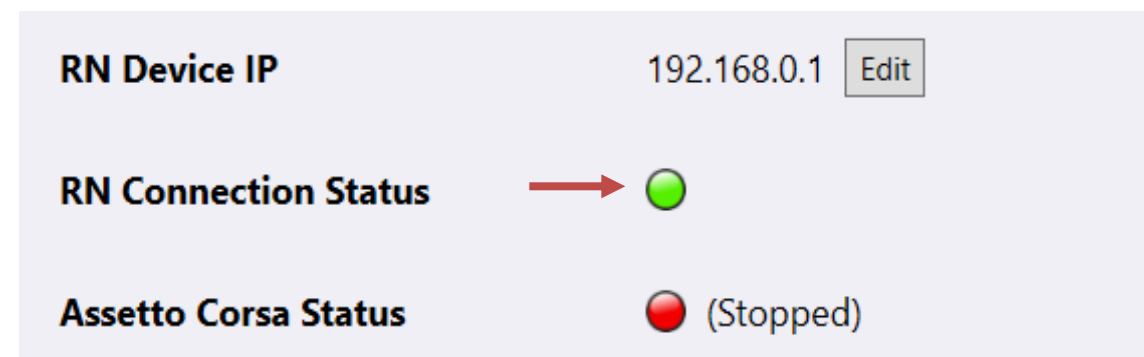
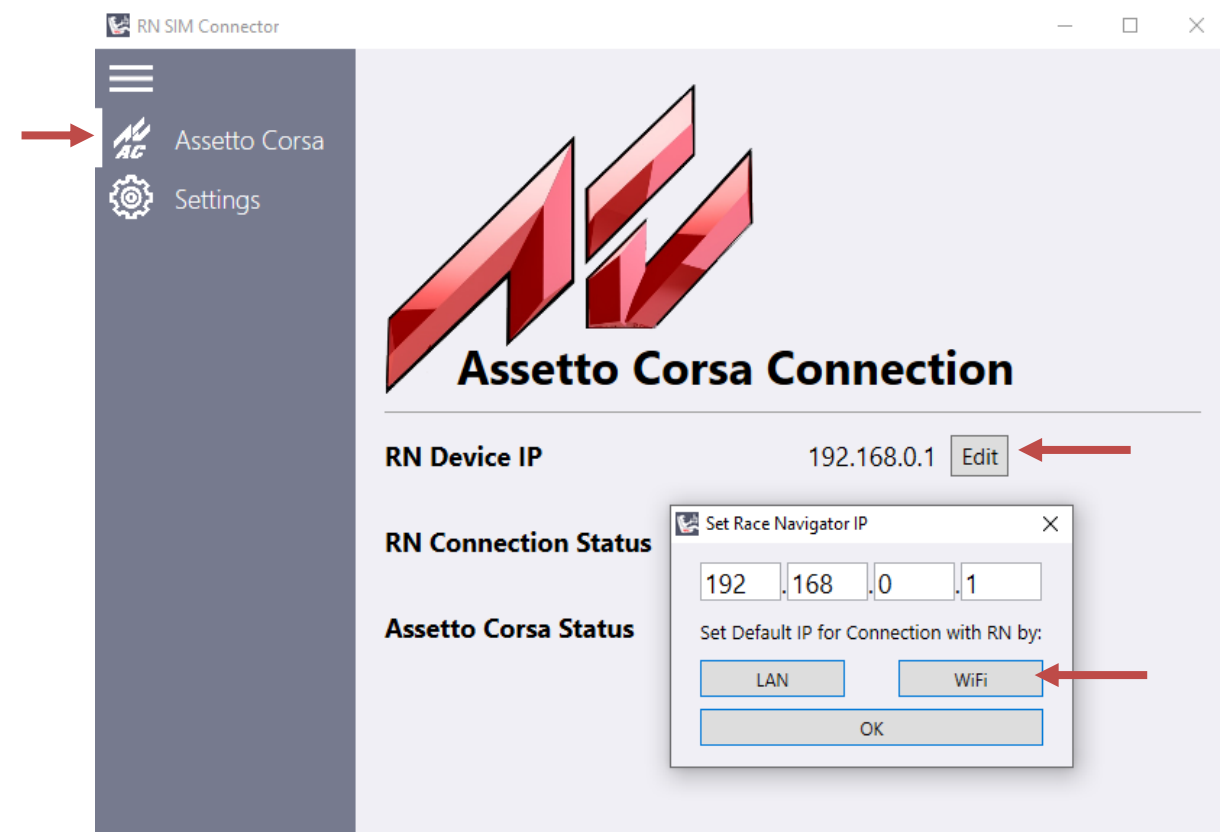
Set the IP address of RN device to a default AP IP address by:

Go to Assetto Corsa tab,

Press Edit button near to the IP address,

Press Wi-Fi button and OK.

Check if RN Connection Status diode is green.





### 6.3. RN SIM USING ROUTER CONNECTION

You can also use your local network to establish a connection between the RN device and your PC.

#### Connecting RN to the same local network using Wi-Fi:

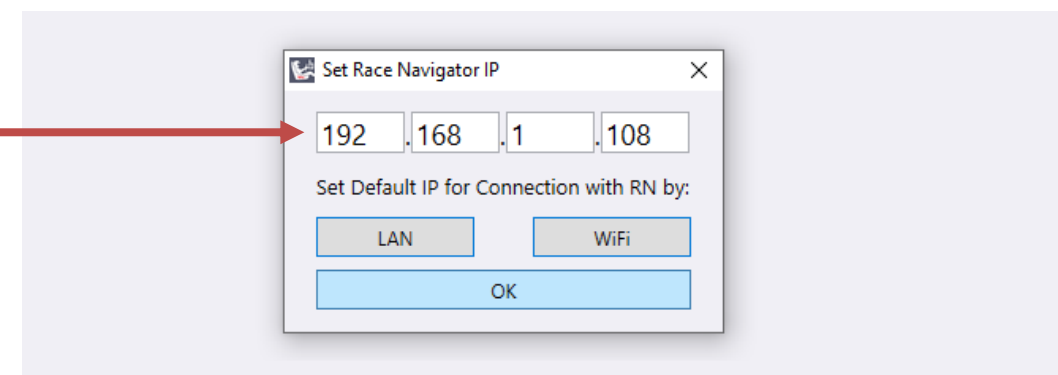
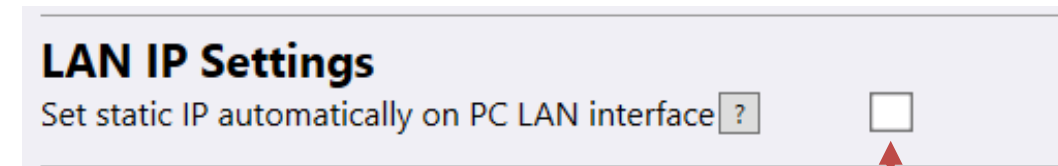
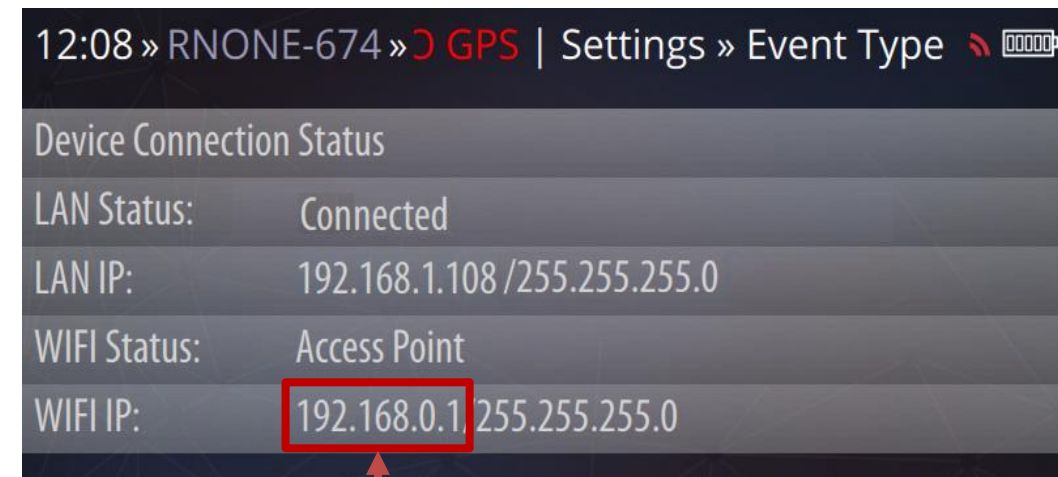
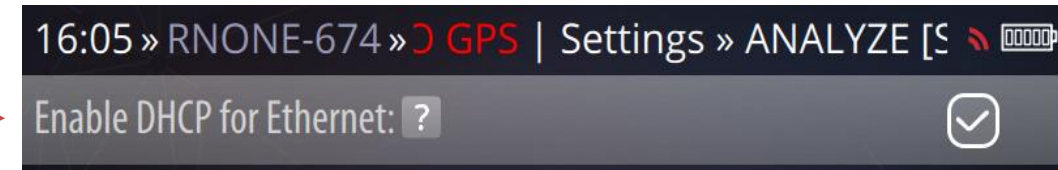
- In the RN device go to: SETTINGS→NETWORK→INTERNET: connect to your local network (your PC must be connected to the same network).

#### Connecting RN to the same local network using LAN cable:

- Connect RN to your router/switch using LAN cable,
- go to: SETTINGS→NETWORK→LAN SETTINGS: Enable DHCP for Ethernet checkbox,
- go to: SETTINGS→EVENT→SIMULATION→SETTINGS and check the Wi-Fi IP address or LAN IP address here, this address must be typed in the RN SIM Connector in a next step.

#### Setting up RN SIM Connector:

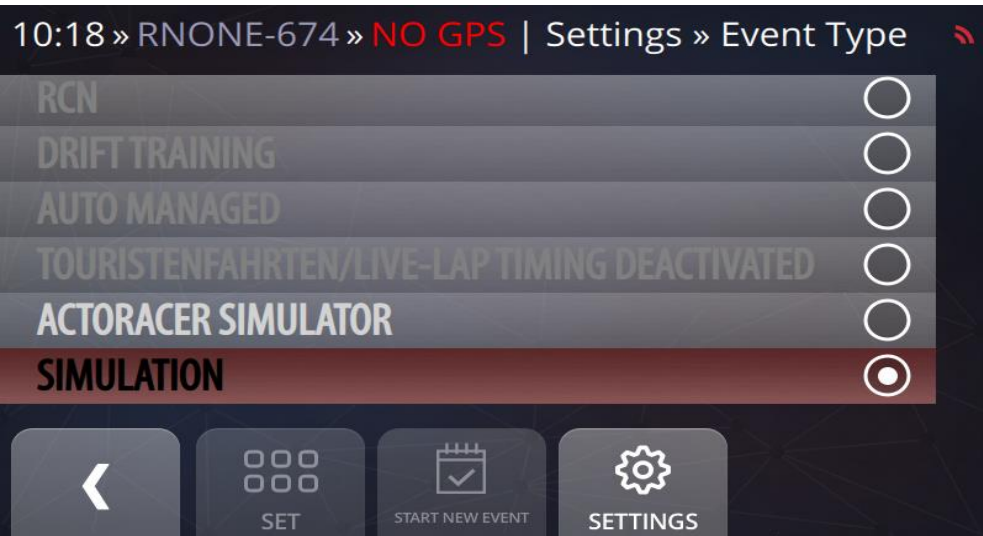
- Start the application, go to SETTINGS and disable static IP checkbox,
- Then use IP address visible in the RN device to fill up IP address boxes in the RN SIM Connector APP, then press OK,
- Check if the RN Connection Status has changed to green,
- You are ready to play.



6.4. **SETUP RACE NAVIGATOR**

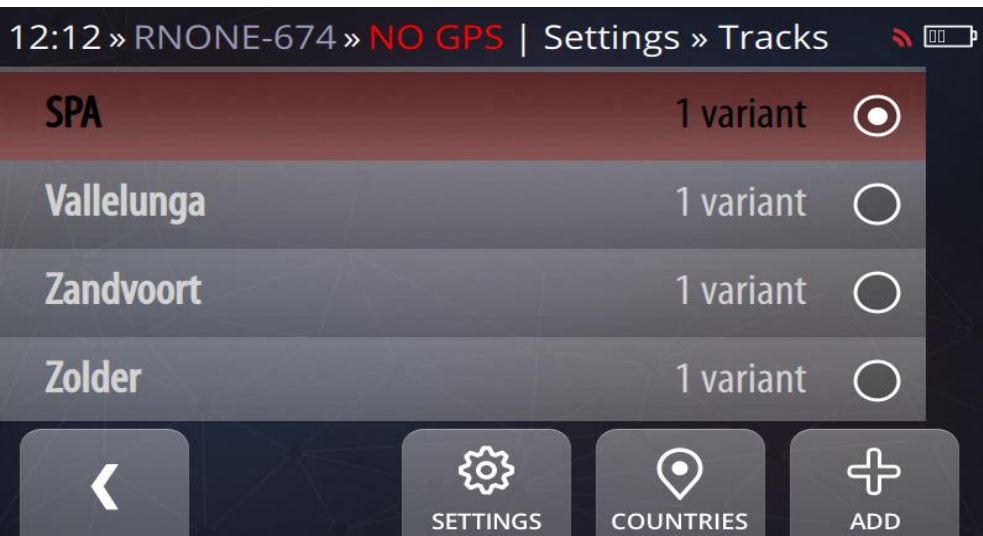
Select Simulation Event type

SETTINGS→EVENT→SIMULATION.



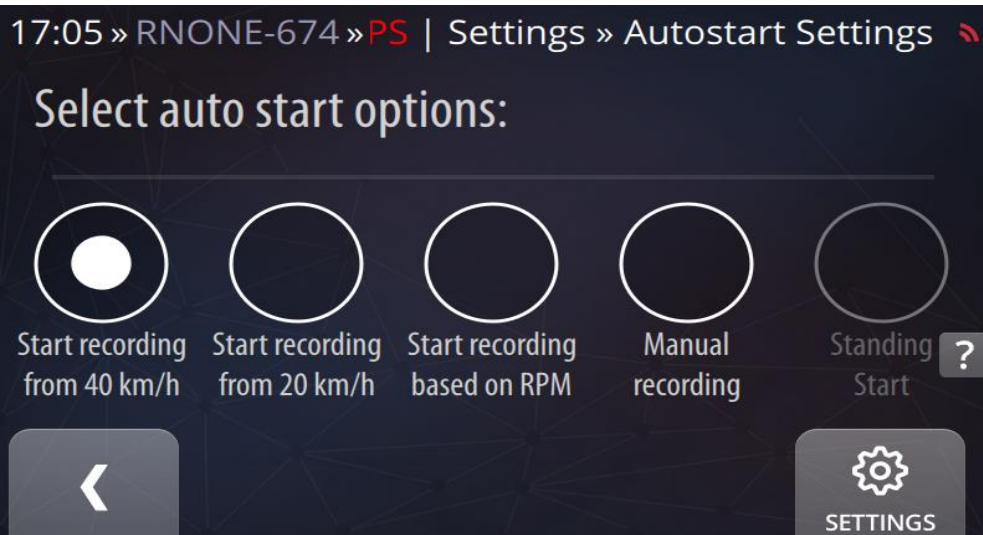
Setup Track Variant

Chose the same track variant as you want  
to use in Assetto Corsa Racing simulator.



Setup Recording Mode

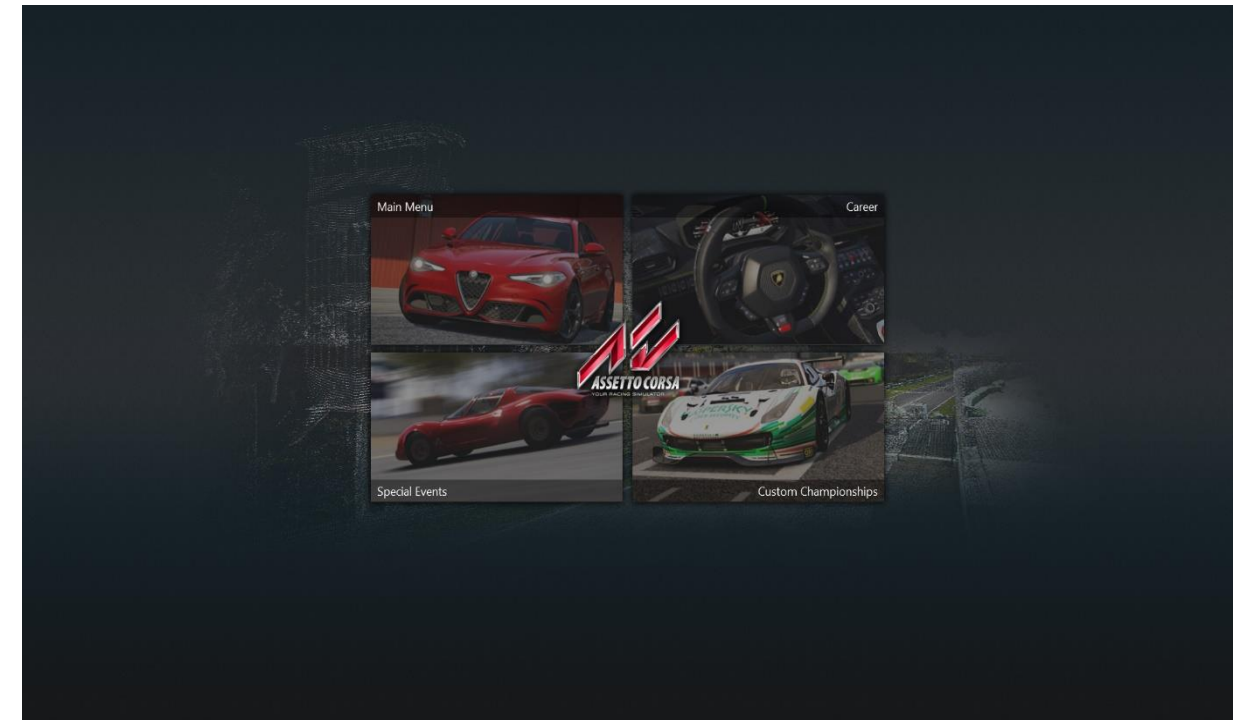
The recommended settings are to use  
Auto Start mode as is normally used on track.



## 6.5. START ASSETTO CORSA RACING SIMULATOR

### Start Assetto Corsa Racing Simulator

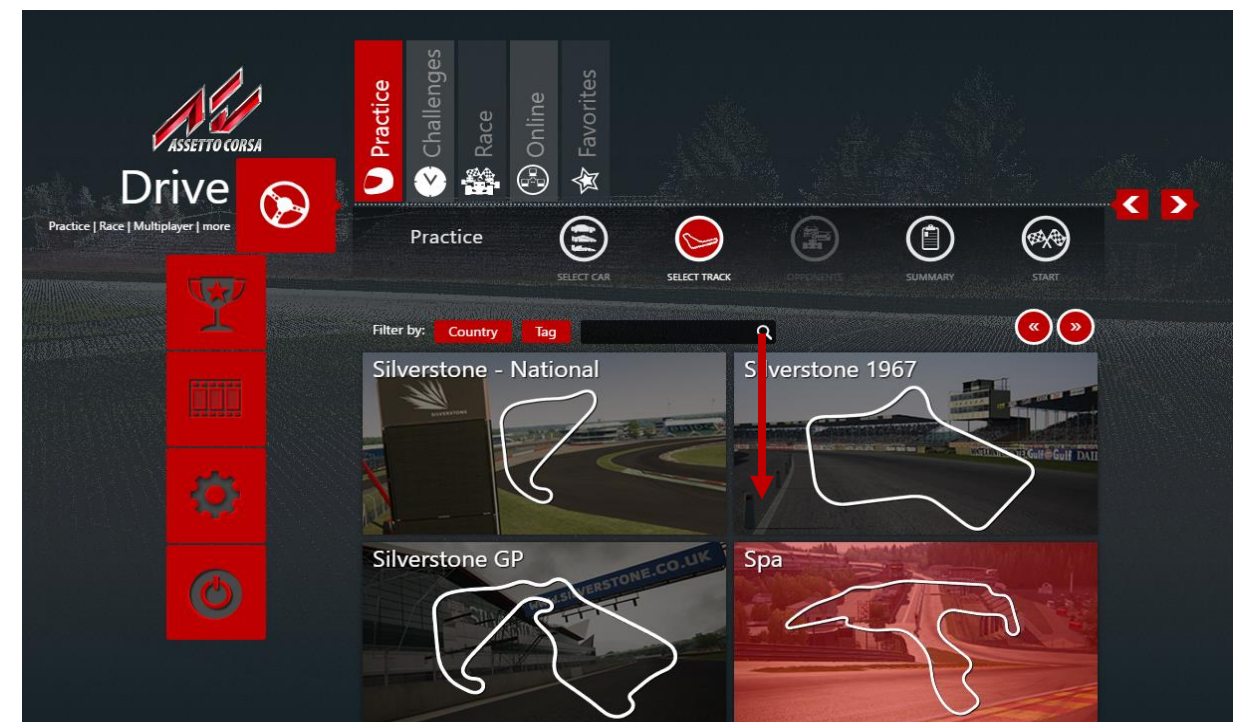
Start the game by clicking on shortcut icon on your desktop or in your STEAM client. When you start your game go to “Main Menu”.



### Set Track Variant

Chose a Mode and Car then

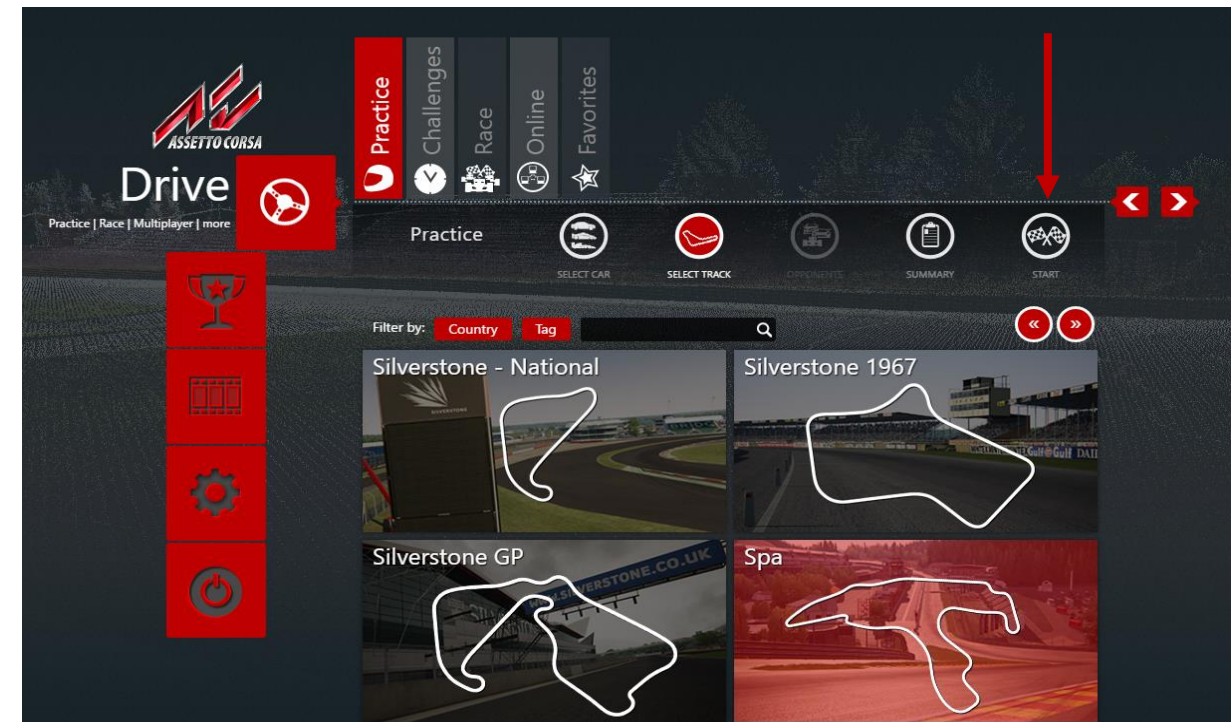
Select the same Track Variant as you have chosen on your RN device.





## Start Game

Once you finish with selecting a Car and Track Variant you are now ready to drive. Click on START Icon.



## Verify Connection between systems

When you start driving in your simulator please verify if recording on your device has automatically started and data from the game are visible in the RN Dashboard. If this is visible, that means your RN device is properly connected to the RN SIM Connector and a simulator. Now all data are being recorded to your RN device like normally on the track.

You can also use your RN Dashboard with a gap to reference while driving.





7. SIM LAPS ANALYSIS

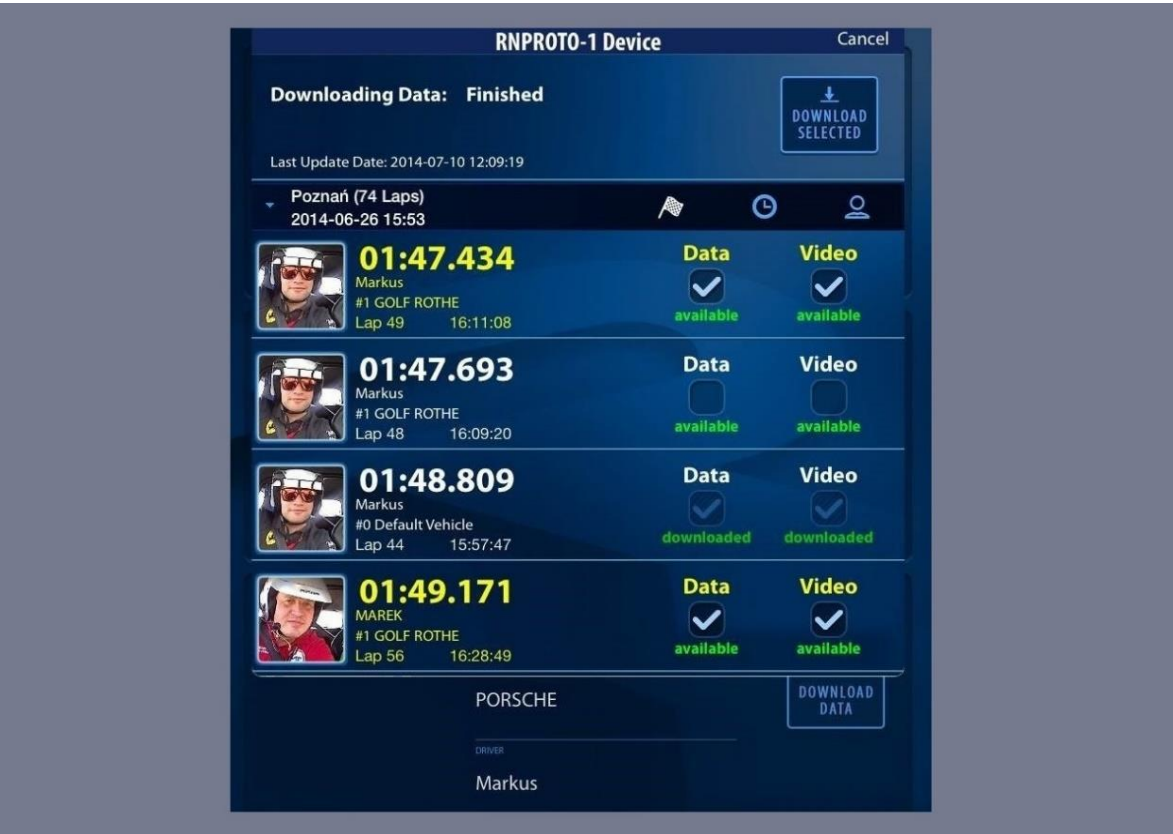
Download recorded lap using RN ANALYZER for Windows or iPad Version.

RN Analyzer for Windows application details:

<https://www.race-navigator.com/wp-content/uploads/RN-Analyzer-Quickstart-Windows-EN.pdf>

RN Analyzer for iPad application details:

<https://www.race-navigator.com/wp-content/uploads/RN-Analyzer-Quickstart-EN.pdf>



# ANALYZE AND COMPARE YOUR DATA

You can analyze Simulation laps recorded on the RN device using RN Analyzer tools. The videos, data charts and position on the map are immediately synchronized according to the slider's position. You can choose any laps that were recorded, compare Simulation laps with each other and real laps with Simulation laps as well.

All data are precisely synchronized and real GPS coordinates matching Simulation positions.

Charts display data of all selected laps.

Chose a Component you wish to Display:







RN Vision GmbH  
Am Nordpark 1  
41069 Mönchengladbach  
Germany

Fon: +49 2161 63 970 11  
Fax: +49 2161 63 970 12  
E-Mail: [info@rn-vision.de](mailto:info@rn-vision.de)  
www: [www.race-navigator.com](http://www.race-navigator.com)

